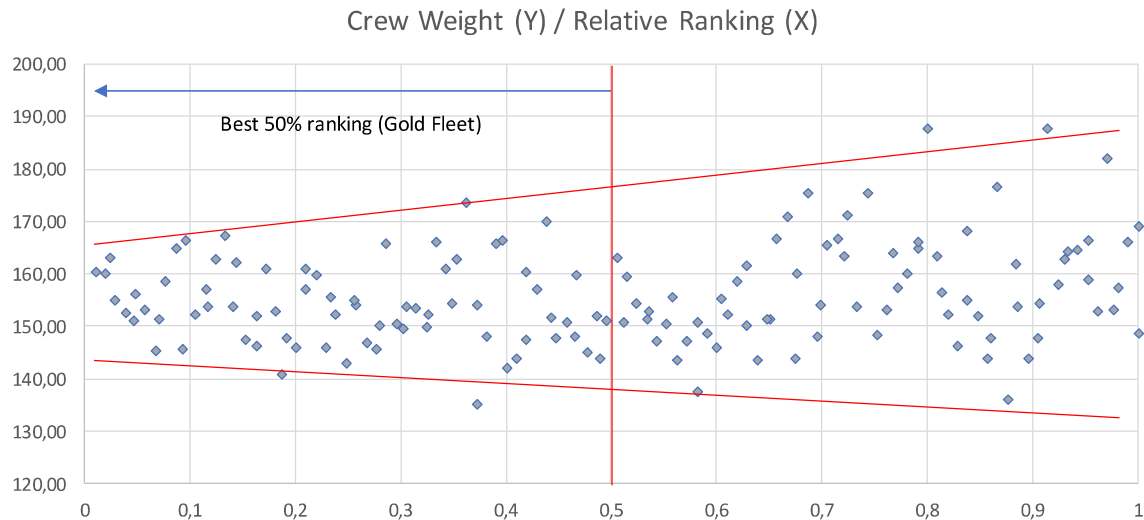


Initial analysis of results for crew weights and F18 decksweeper mainsails

F18 Worlds 2018 and 2019



- Relative rankings set against crew weights for two events: 2018 Worlds and 2019 Worlds
- Only scores of teams with decksweeper mainsails are included. Total pool of 147 scores: 43 boats in 2018; 104 boats in 2019
- Relative ranking = individual team score divided by total number of entrees for each event (in order to be able to compare scores between events)
- First finishing team relative ranking ~ 0.01 ; worst team relative ranking ~ 0.99
- Lightest team ~ 135 kg; heaviest team ~ 188 kg; no small rig entrees
- During both these events conditions were mostly no trapeze, single trapeze or marginally double trapeze upwind (5-12 knots) in which lighter crews can be expected to perform relatively well
- Crew weights of best 50% scoring teams (\sim Gold Fleet) typically converge between circa 140 and 170 kg.

Initial analysis of results for crew weights and F18 decksweeper mainsails

F18 Worlds 2018 and 2019

Average relative ranking



- For total pool the average relative ranking score is 0.506
- Best scoring bracket is 160.0-162.4 kg crew weight with an average relative ranking of 0.35
- Next best scoring bracket is 145.0-147.4 kg; average relative ranking is 0.36, which is 0.01 higher than best scoring bracket, equivalent to 1 position in absolute ranking for an average fleet size of ~74 boats (147/2)

Weight group	Average Ranking	Delta to best weight group	Delta - Ranking Equivalent	Average Crew weight	Number of boats	% of total entries
135.0 - 142.4	0,48	0,13	10	138,33	5	3,4%
142.5 - 144.9	0,60	0,25	18	143,60	8	5,4%
145.0 - 147.4	0,36	0,01	1	146,08	12	8,2%
147.5 - 149.9	0,53	0,18	14	148,20	14	9,5%
150.0 - 152.4	0,44	0,09	7	151,32	22	15,0%
152.5 - 154.9	0,48	0,12	9	153,70	21	14,3%
155.0 - 157.4	0,46	0,11	8	156,32	11	7,5%
157.5 - 159.9	0,57	0,22	16	159,03	8	5,4%
160.0 - 162.4	0,35	0,00	0	160,90	10	6,8%
162.5 - 164.9	0,63	0,28	20	163,49	11	7,5%
165.0 - 167.4	0,50	0,15	11	166,20	13	8,8%
167.5 - 174.9	0,67	0,32	24	170,48	6	4,1%
=> 175	0,83	0,48	35	180,73	6	4,1%
TOTAL					147	